

The clinical value of the Polygenic Risk Map Testing



Hi, I'm Dr. Sodano, the director of clinical support and education at Evexia Diagnostics.



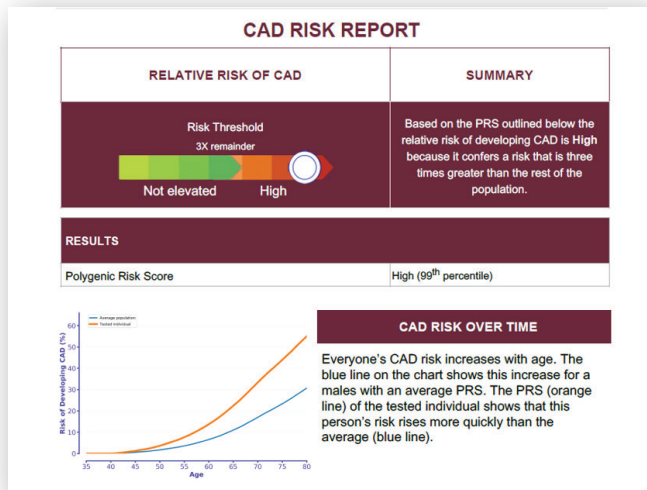
I'm going to talk to you about a great genomic test we offer from Boston Heart Diagnostics called the "Polygenic Risk Map", which is offered as a Male Complete and Female Complete test, which utilizes saliva.

As you may know, genetic testing from a preventive medicine perspective, also known as Preventive Genomic Screening, is a valuable tool in identifying risk factors for future disease.

Genomic screening can provide information about the genetic-based risk for developing a range of conditions, including cancers, cardiovascular disease, and neurological conditions such as Alzheimer's disease.

Our Boston Heart's Polygenic Risk Map test is a genetic test that leverages Polygenic Risk Score analysis and reporting. The resulting risk scores provide clinical insights into a variety of important health conditions. Because the lifetime risk of these conditions is also substantially influenced by the environment and lifestyle, a greater understanding of genetic risks may lead to greater preventive efforts.

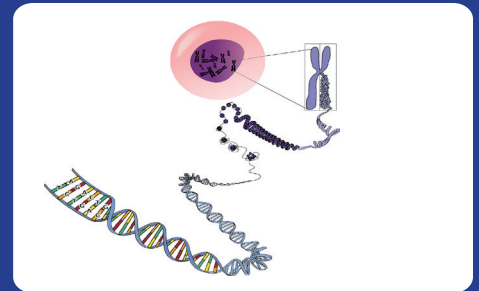
As always, I hope this information serves you and your patients well. Until next time, I wish you all the best personally and in practice.



OFFERED IN TWO VERSIONS:

THE FEMALE COMPLETE assesses for the genetic risk of:

- Coronary Artery Disease
- Atrial fibrillation
- Type 2 Diabetes
- Hypertension
- BMI
- Triglycerides
- Low HDL Cholesterol
- High LDL Cholesterol
- Lipoprotein (a)
- Alzheimer's disease
- Inflammatory Bowel Disease
- Breast cancer
- Osteoporosis
- Early Menopause



THE MALE COMPLETE assesses for the genetic risk of:

- CAD
- Atrial fibrillation
- Type 2 Diabetes
- Hypertension
- BMI
- Triglycerides
- Low HDL Cholesterol
- High LDL Cholesterol
- Lipoprotein (a)
- Alzheimer's disease
- Inflammatory Bowel Disease (IBD)
- Prostate cancer

Learn more about the Boston Heart's Polygenic Risk Map Test by [clicking here](#).

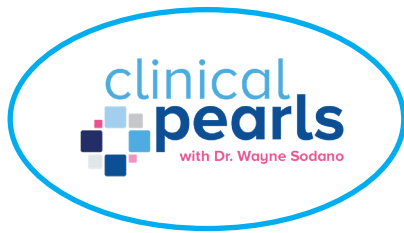
Learn more about the Evexia Nutraceuticals by [clicking here](#).

To learn more about Evexia Diagnostics scan the QR Code.

Phone: 888-852-2723 | EVEXIADIAGNOSTICS.COM



SCAN ME



The clinical value of the Polygenic Risk Map Testing



Here are some Evexia Nutraceuticals™ recommendations related to genetic risk conditions for your patients:

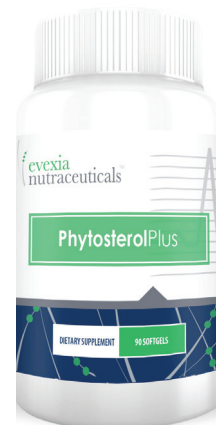
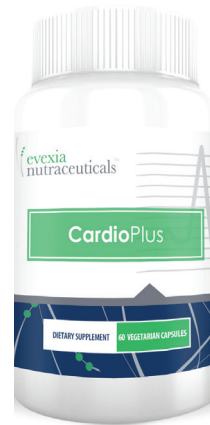
CARIO PLUS– Cardio Plus is a powerful combination of natural substances designed to provide nutritional support for cardiac and vascular health. This formula includes vitamin E isomers as delta and gamma tocotrienols, organic red yeast rice extract (Monascus purpurea), and lycopene with added lecithin for bioavailability.

GLUCOBALANCE PLUS – GlucoBalance Plus is ideal for supporting healthy insulin and glucose levels. This unique, synergistic formula combines standardized herbs and other botanicals that are shown to support healthy blood sugar through various mechanisms, including cinnamon, corosolic acid from banaba, isoflavones from kudzu, and ginsenosides from ginseng. It also contains berberine (Berberis aristata), a compound highly regarded for its efficacy in supporting healthy blood glucose regulation and insulin sensitivity.

PRO-T ENZYMES – Pro-T Enzymes is a blend of two very potent proteolytic enzymes, Nattozimes® and Serrazimes®. In various studies, these brand name enzyme products have been shown to have the same thrombolytic and fibrinolytic activities as the popular enzyme products nattokinase and serrapeptidase, and can support joint, circulatory, respiratory and immune health.

HTPRO COMPLEX – HTPro Complex contains nutrients that address various mechanisms to help promote healthy blood pressure. Bonito Peptides and Grape Seed Extract (Vitis vinefera) are included for their antioxidant activity, cardioprotective properties, and promotion of normal vascular tone

PHYTOSTEROL PLUS – Phytosterol Plus contains a phytosterol mixture of plant sterols/stanols shown to effectively support healthy cholesterol levels in the body.** This mixture is from the non-GMO tall oil of the coniferous pine tree; and primarily consists of four major phytosterols: beta-sitosterol, campesterol (in the free sterol form, not as sterol esters), campestanol, and sitostanol.



Learn more about the Boston Heart’s Polygenic Risk Map Test by [clicking here](#).

Learn more about the Evexia Nutraceuticals by [clicking here](#).

To learn more about Evexia Diagnostics scan the QR Code.

Phone: 888-852-2723 | EVEXIADIAGNOSTICS.COM



SCAN ME